

The following information is the result of your child taking a practice ACT exam under normal testing conditions. The **score range** for the ACT is **1-36** with 36 being the highest score and **21** being the national average. Many colleges require an **18** for **admissions** and offer **scholarships** with a **26** or higher. The ACT was designed to test students' knowledge and abilities in core academic subjects from the beginning of their education to their junior year in high school. Thus, juniors in high school are expected to have been exposed to all skills covered on the exam.

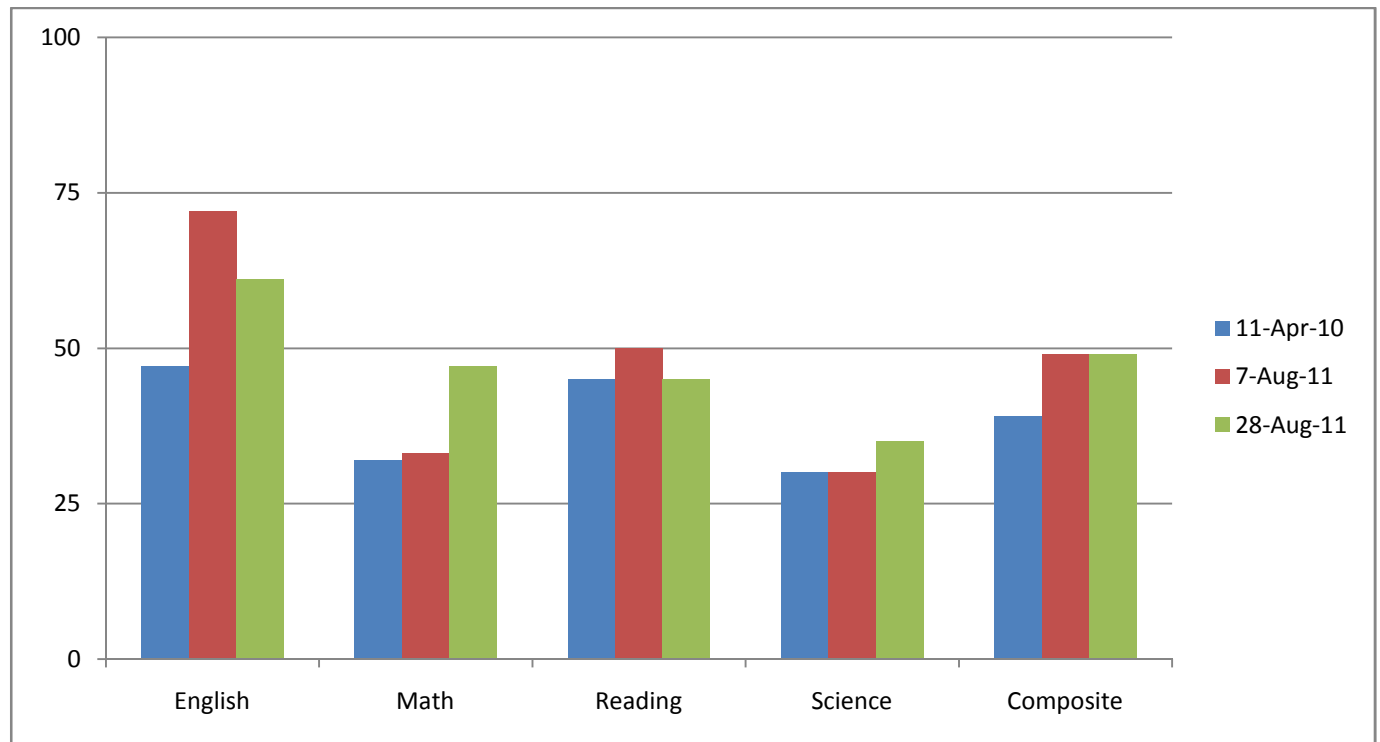
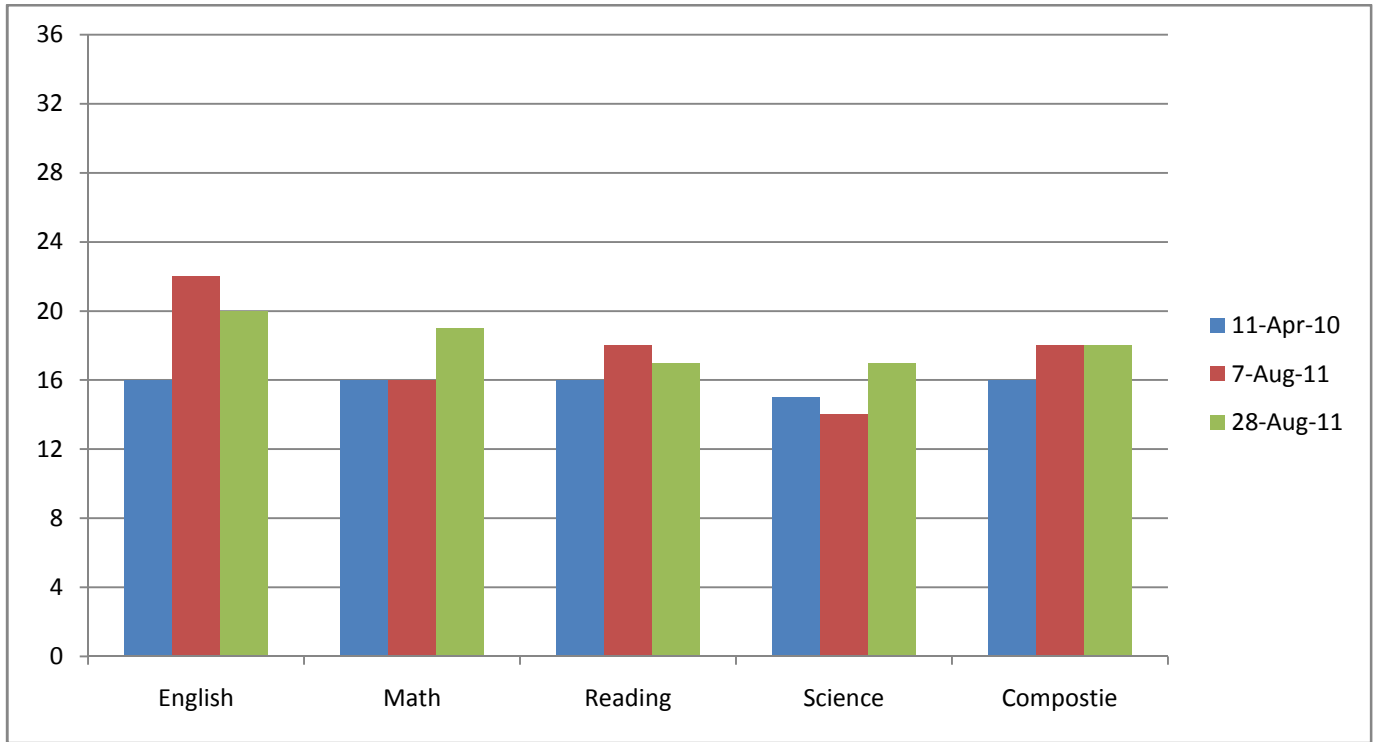
The table consists of the number of questions answered correctly, the number of questions attempted (number of questions in that section), percent correct, ACT score for that section and a composite score. The bar graphs illustrate the data from the tables.

Upon reading these scores, I would advise caution. ACT admits that this test is a test of academic skills acquired and learned up to a certain point (11<sup>th</sup> grade), not academic potential. Thus, it's more than likely that your child's success or failure is a result of exposure to skills rather than learning ability. We know this is not always the case as there are some learning disabilities. But, we'd like to think that if your child is exposed to more skills and strategies, they will be better at taking the test, thus the need for our ACT course.

Also note that these scores are the result of a practice test and are used to estimate a range of possible scores your child could achieve when they take the actual ACT. Therefore, we do not guarantee that students will score the same on the actual ACT as they did on this practice exam.

Depending on your child's success with this practice test and other tests we give them, I offer taking this course more than once. Strategies on how to take this particular test can be covered in a short amount of time. However, teaching and reinforcing the skills a student is supposed to have covered in all their years of school up to 11<sup>th</sup> grade will take time.

	# Correct	# Attempted	% correct	ACT Score
English	46	75	61%	20
Math	28	60	47%	19
Reading	18	40	45%	17
Science	14	40	35%	17
Composite	106	215	49%	18

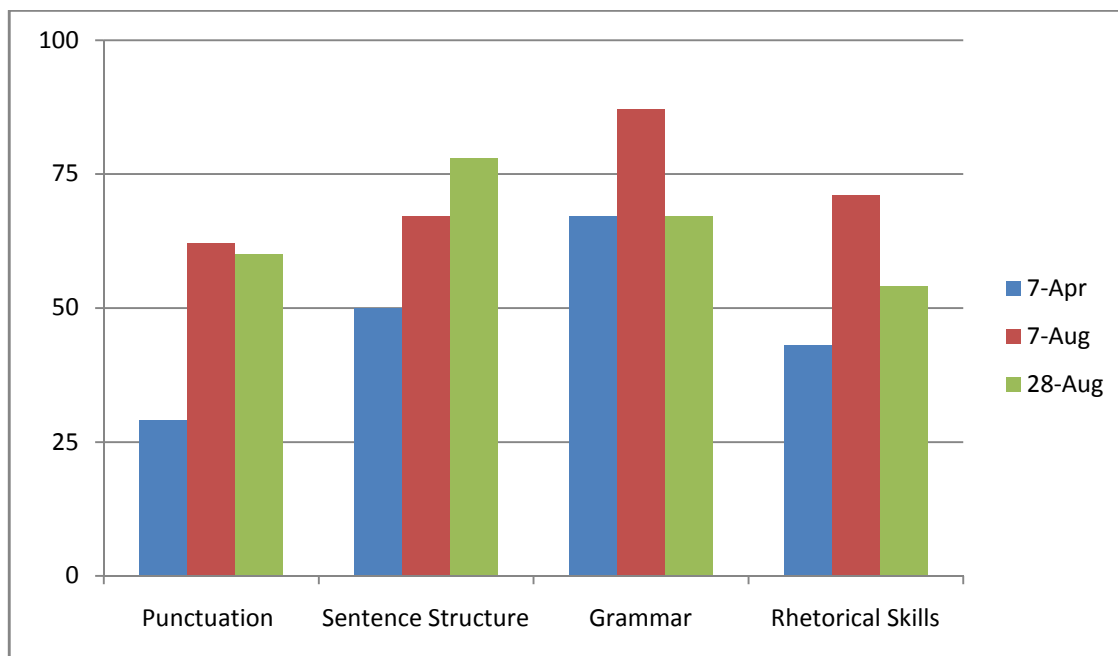


## English

There are four types of skills tested on the English section of the ACT:

- ✓ Punctuation - commas, apostrophes, colons, semi-colons, parentheses, etc.
- ✓ Sentence Structure - sentence fragments, run-ons and comma splices, misplaced modifiers, non-parallel construction
- ✓ Grammar – agreement, case, and tense with pronouns, verbs, adjectives, subjects, adverbs
- ✓ Rhetorical Skills – strategy, transition, organization and style of sentences and paragraphs

English	Correct	Possible	Percent Correct
Punctuation	6	10	60%
Sentence Structure	14	18	78%
Grammar	7	12	67%
Rhetorical Skills	18	35	54%

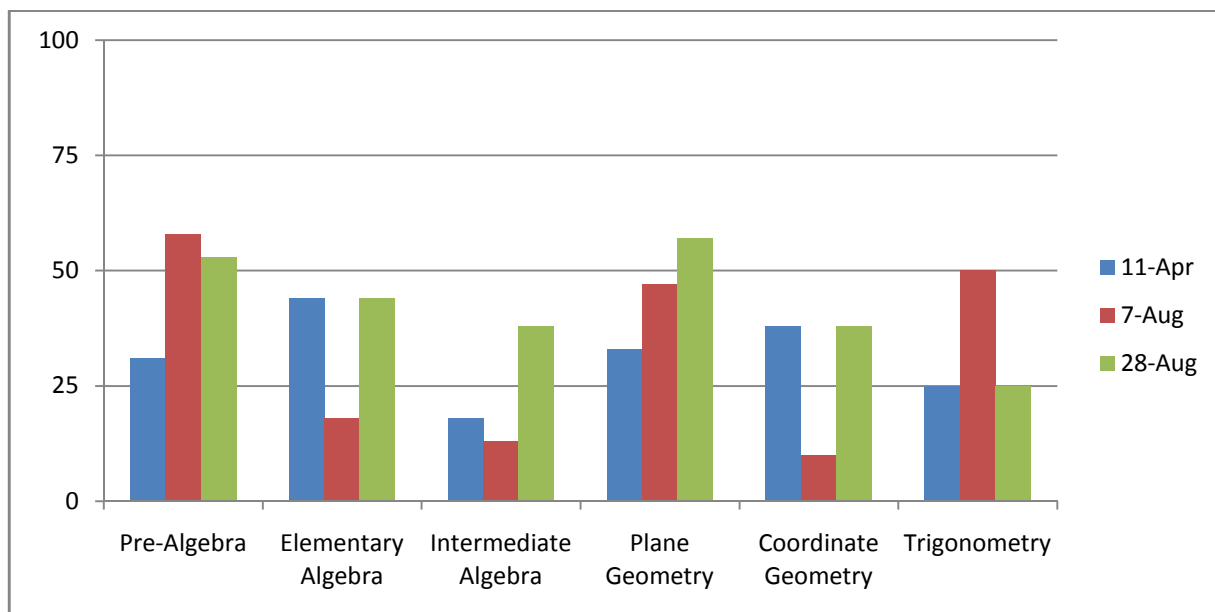


## Math

There are six types of skills tested on the math portion of the ACT:

- ✓ Pre-Algebra – terminology (integers, rational, etc.), basic number theory (order of operations, distributive property, etc.), manipulating fractions and decimals, ratios, percent and averages.
- ✓ Elementary Algebra – inequalities, linear equations, absolute value equations
- ✓ Intermediate Algebra – exponents, roots, system of equations, quadratic equations
- ✓ Plane Geometry – angles, lengths, triangles, quadrilaterals, circles, perimeter, area and volume
- ✓ Coordinate Geometry – slope, distance, midpoint, parallel and perpendicular lines, points of intersection and graphing
- ✓ Trigonometry – sine, cosine and tangent functions, trig identities, and graphing

Math	Correct	Possible	Percent Correct
Pre-Algebra	8	15	53%
Elementary Algebra	4	9	44%
Intermediate Algebra	3	8	38%
Plane Geometry	8	14	57%
Coordinate Geometry	3	8	38%
Trigonometry	1	4	25%

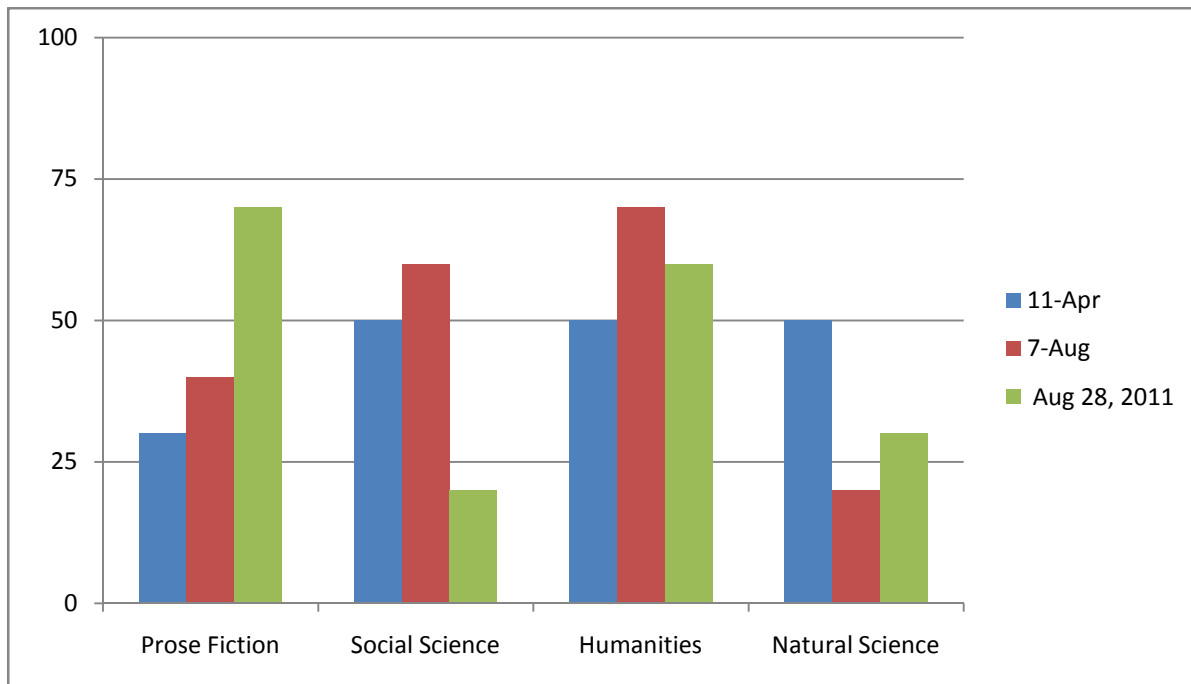


## Reading – Part A (Analysis by Passage)

There are four types of reading passages that are tested on the ACT:

- ✓ Prose Fiction
- ✓ Social Science(History)
- ✓ Humanities (Literature, art, poetry, etc.)
- ✓ Natural Science

Reading	Correct	Possible	Percent Correct
Prose Fiction	7	10	70%
Social Science	2	10	20%
Humanities	6	10	60%
Natural Science	3	10	30%

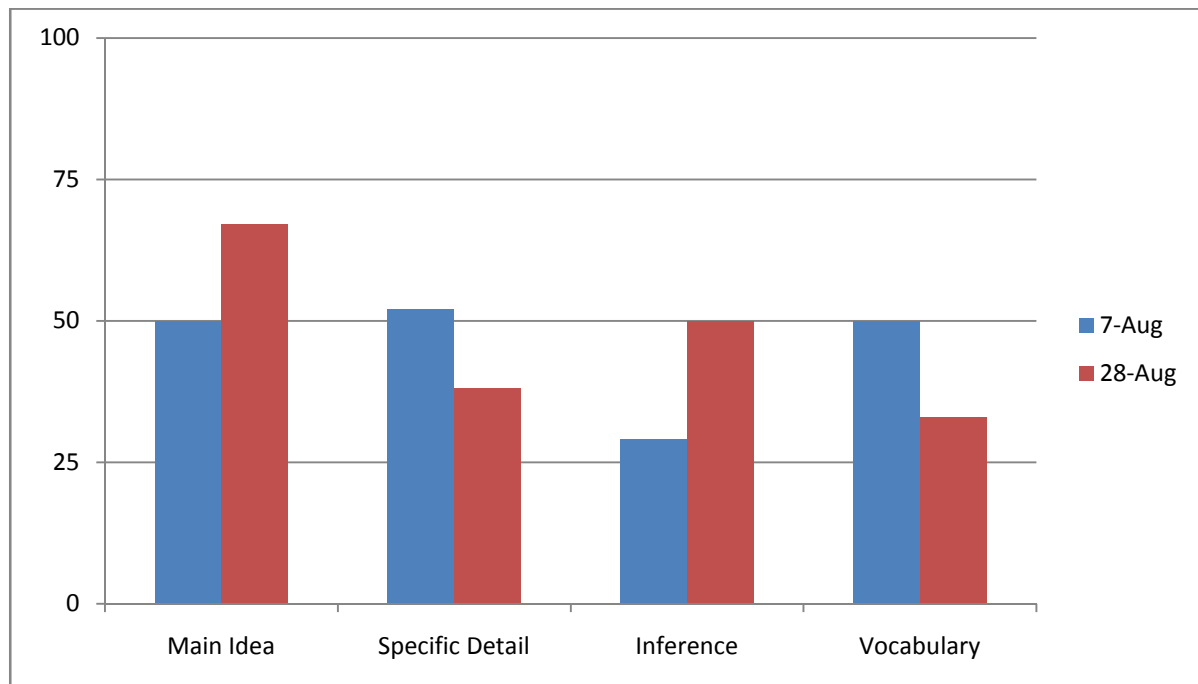


## Reading – Part B (Analysis by Question Type)

There are four types of reading questions tested on the ACT:

- ✓ Main Idea – of a specific passage or paragraph; author point of view or perspective
- ✓ Specific Detail
- ✓ Inference/Extrapolation – draw conclusions based on passage
- ✓ Vocabulary

Reading	Correct	Possible	Percent Correct
Main Idea	4	6	67%
Specific Detail	8	21	38%
Inference/Extrapolation	5	10	50%
Vocabulary	1	3	33%



## Science

There are three types of science passages that are tested on the ACT:

- ✓ Data Representation- charts and graphs
- ✓ Research Summaries – results of experiments
- ✓ Conflicting Viewpoints – arguing scientists

Science	Correct	Possible	Percent Correct
Data Representation	7	15	47%
Research Summaries	5	18	28%
Conflicting Viewpoints	2	7	29%

